

# Shuttle-KURT SK1

Aug 2018

The Shuttle-KURT SK1 is a novel type of shuttle vehicle, designed with shared electric driving in mind. Weighting less than 450 kg (without batteries) it meets the L7 vehicle requirements and can transport up to 4 people and some luggage. Other versions can be configured for transporting goods or as a utility vehicle.

Optionally, when communication between a dispatch center and the driver is desirable, a smartphone with app can be provided. This allows to monitor a fleet of vehicles, monitor the vehicle status and provide help or give instructions.

Operators can install an autonomous driving system with the capability to remotely supervise and control the shuttle as the need arises.

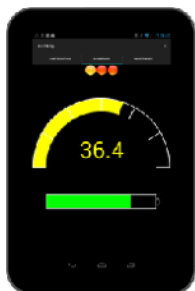
The Shuttle-KURT SK1 is electronically controlled. It has two active wheels that provide for easy manoeuvrability and fast acceleration. Its powerful batteries can cover up to 50 km. They recharge during the night or when parked. KURT provides the lowest air and noise pollution at the lowest energy cost, yet it takes less space than standard vehicles.



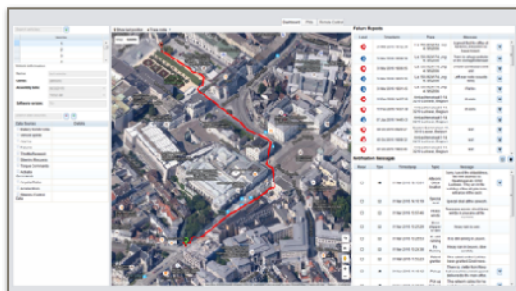
The Shuttle-KURT SK1 can be customised and equipped with stronger motors and more powerful batteries.

For autonomous driving a four wheel version is recommended, allowing to drive in both directions

*Optional dashboard  
via a smartphone*



*Optional fleet monitoring  
using central server*



The electric SK1 offers:

- Emission-free transport.
- Operates from -40°C to +50°C
- Fast charging
- Low noise
- Low energy consumption
- Recyclable yet robust aluminium platform.
- Versatile for different uses.

***KURT: urban e-mobility reinvented***  
***A Shuttle-KURT SK1 designed to meet your specific needs.***



**Personal vehicle:** small and safe, take it for short trips to visit friends, family or to go shopping.

**Food delivery:** transport the pizza and food orders in an insulated cargo box.

**Emergency services:** in crowded areas a fast intervention is difficult. Use a small SK1 and quickly drive with emergency equipment to where help is needed.

**Professional services.** For those who provide services at home and need to carry basic equipment. With the SK1, you can get anywhere.

**Light Logistics.** Last mile deliveries for parcels and mails.

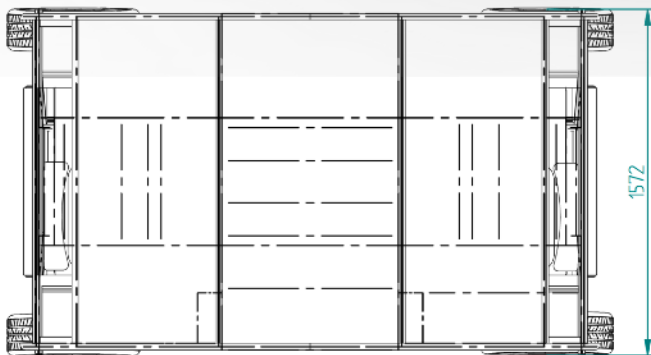
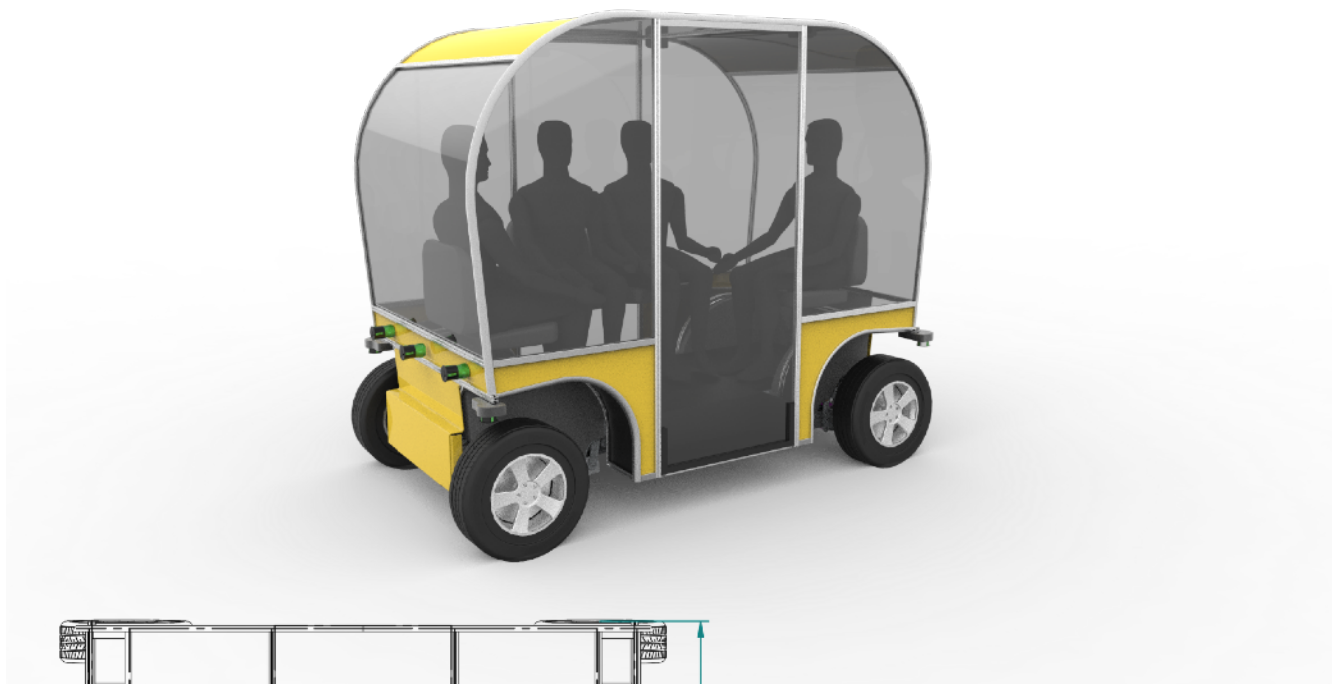
**Security services.** Patrolling the streets or sites and taking essential equipment with you.



General performance SK1-A: Dimensions: 1530 W x 2000 H x 2500 L (approx.), max. speed 25 (software defined). Two in-wheel motors of 4.0 kW with regenerative braking, 2 x 228 Nm, battery 48 VDC - 40 Ah nominal, operates from -40°C to +50 °C environment, charger 16A 220 VAC, front and rear lights, rearview mirrors, safety belts. All specifications and depicted models are subject to change and customisation.

Shuttle-KURT SK1-B: L7e type vehicle, maximum speed 45 km/h. 4 in-wheel motors and 2 batteries.

*All specifications are subject to change without prior notice.*



Main dimensions:

Basic model:

2747 L x 1572 W x 2320 H

